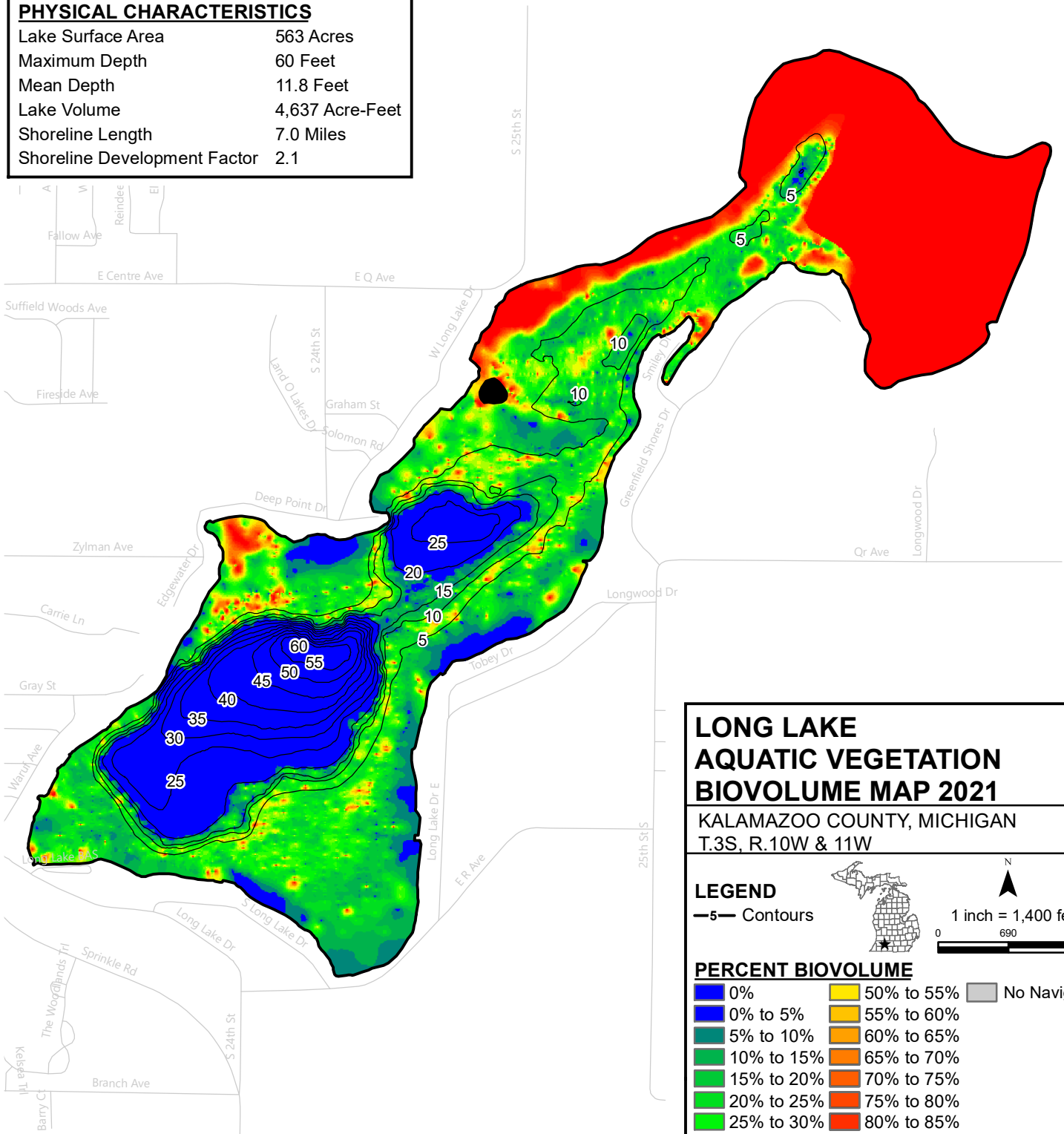


**PHYSICAL CHARACTERISTICS**

Lake Surface Area	563 Acres
Maximum Depth	60 Feet
Mean Depth	11.8 Feet
Lake Volume	4,637 Acre-Feet
Shoreline Length	7.0 Miles
Shoreline Development Factor	2.1

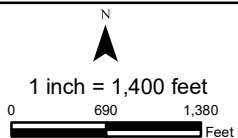


**LONG LAKE  
AQUATIC VEGETATION  
BIOVOLUME MAP 2021**

KALAMAZOO COUNTY, MICHIGAN  
T.3S, R.10W & 11W

**LEGEND**

—5— Contours



**PERCENT BIOVOLUME**

0%	50% to 55%	No Navigable
0% to 5%	55% to 60%	
5% to 10%	60% to 65%	
10% to 15%	65% to 70%	
15% to 20%	70% to 75%	
20% to 25%	75% to 80%	
25% to 30%	80% to 85%	
30% to 35%	85% to 90%	
35% to 40%	90% to 95%	
40% to 45%	95% to 100%	
45% to 50%	>100%	

Note: Biovolume is a measure of the height of plants in the water column. A biovolume measurement of 50% indicates plants occupy one-half of the water column. Hydro-acoustic measurements conducted in October of 2021.

Hydro-acoustic data processed by Navico. Lake shoreline digitized from aerial orthodigital photography (Source: Vivid 2019).

February 2022