



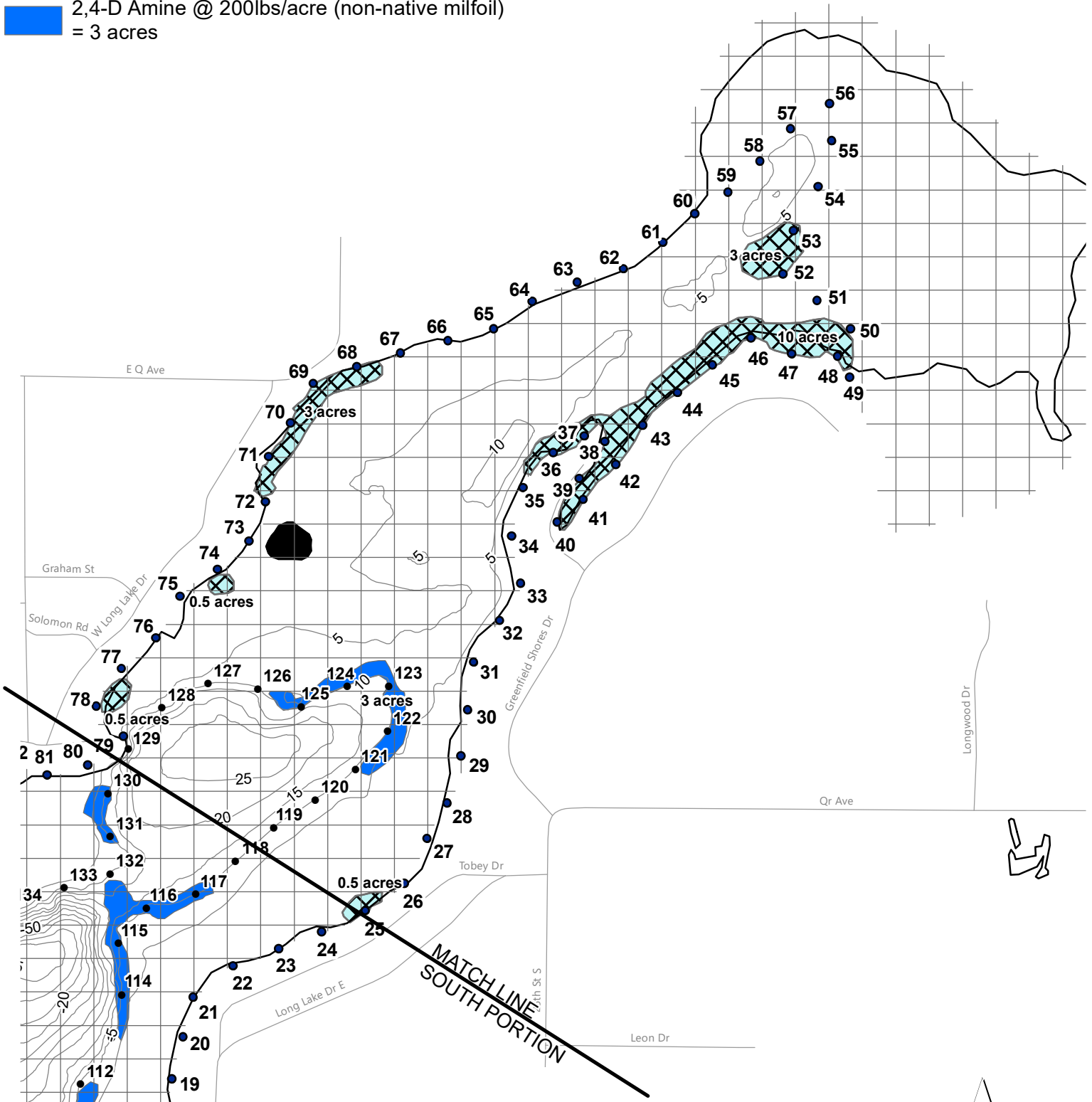
LONG LAKE (NORTH PORTION) KALAMAZOO COUNTY, MICHIGAN MAY 16, 2022 TREATMENT MAP

□ = 1 ACRE

Treatment

 Procellacor @ 4 PDU/acre + Diquat @ 1gal/acre
(non-native milfoil) = 17.5 acres

 2,4-D Amine @ 200lbs/acre (non-native milfoil)
= 3 acres



TOTAL LAKE AREA = 496 ACRES
REVISION DATE: MARCH 2022

DEPTH CONTOUR SOURCE - MICHIGAN CONSERVATION DEPARTMENT 1953.

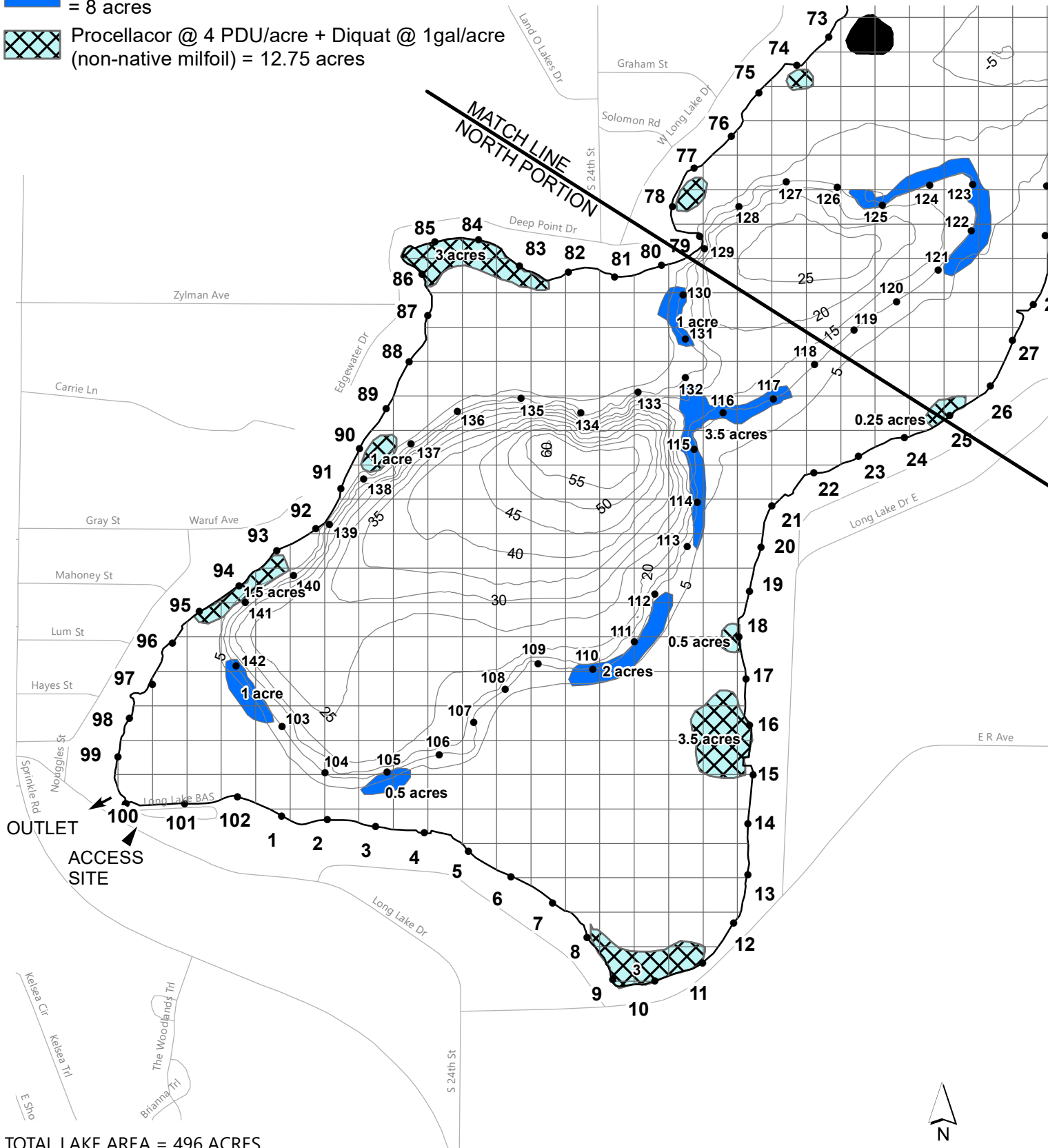
The applicator shall make adjustments, if needed, to comply with EGLE permit requirements.

LONG LAKE (SOUTH PORTION) KALAMAZOO COUNTY, MICHIGAN MAY 16, 2022 TREATMENT MAP

□ = 1 ACRE

Treatment

- 2,4-D Amine @ 200 lbs/acre (non-native milfoil)
= 8 acres
- Procellacor @ 4 PDU/acre + Diquat @ 1gal/acre
(non-native milfoil) = 12.75 acres



TOTAL LAKE AREA = 496 ACRES
REVISION DATE: MARCH 2022

DEPTH CONTOUR SOURCE - MICHIGAN CONSERVATION DEPARTMENT 1953.

The applicator shall make adjustments, if needed, to comply with EGLE permit requirements.

N

0 500 1,000
Feet

progressive|ae