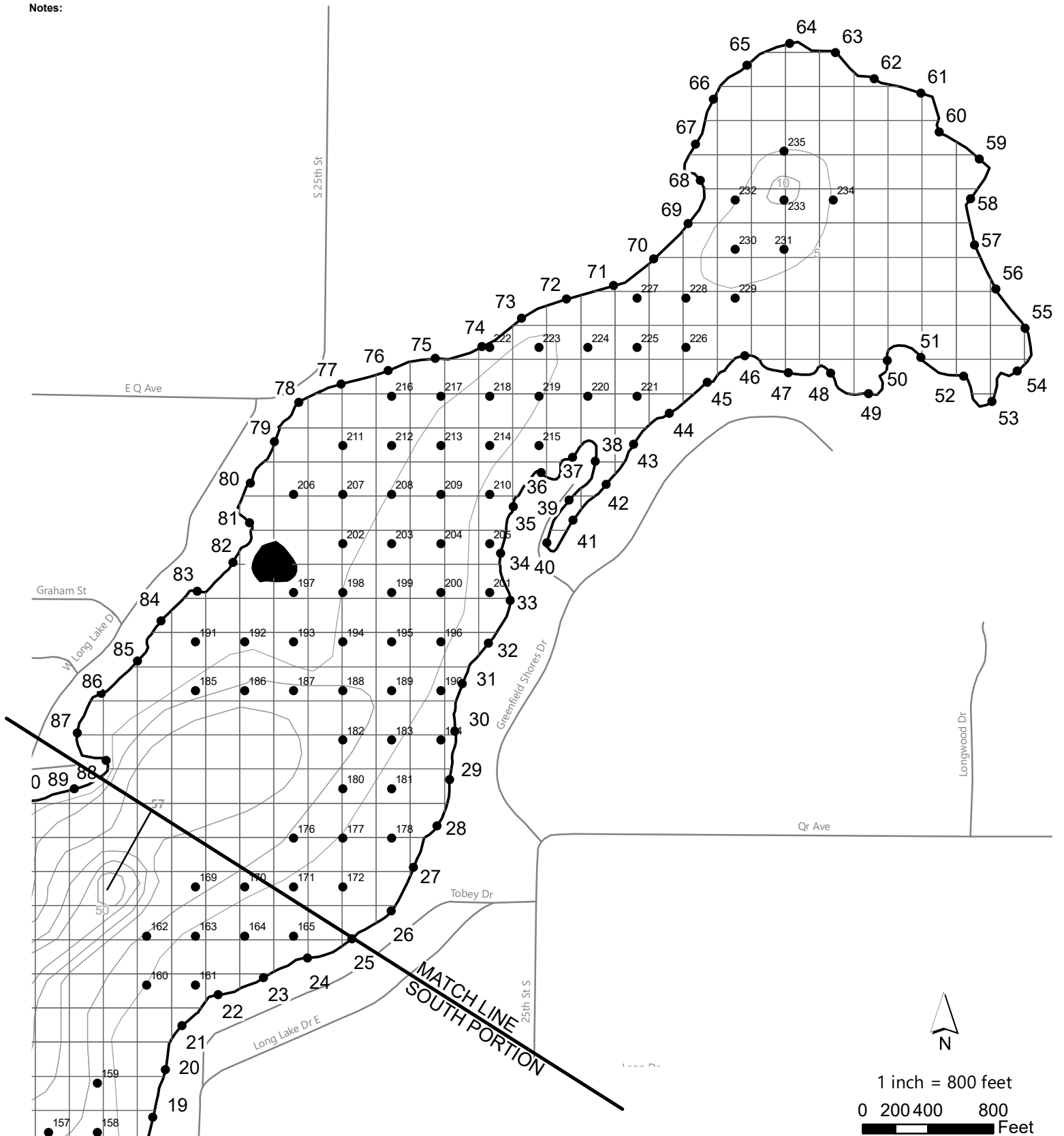


LONG LAKE (NORTH PORTION) KALAMAZOO COUNTY, MICHIGAN AQUATIC PLANT SURVEY MAP

□ = 1 ACRE


Date: _____
Crew: _____
Weather: _____

Notes:



TOTAL LAKE AREA = 496 ACRES
REVISION DATE: JANUARY 2021

DEPTH CONTOUR SOURCE - MICHIGAN CONSERVATION DEPARTMENT 1953.


 1 inch = 800 feet
 0 200 400 800 Feet
 progressive|ae

LONG LAKE (SOUTH PORTION) KALAMAZOO COUNTY, MICHIGAN AQUATIC PLANT SURVEY MAP

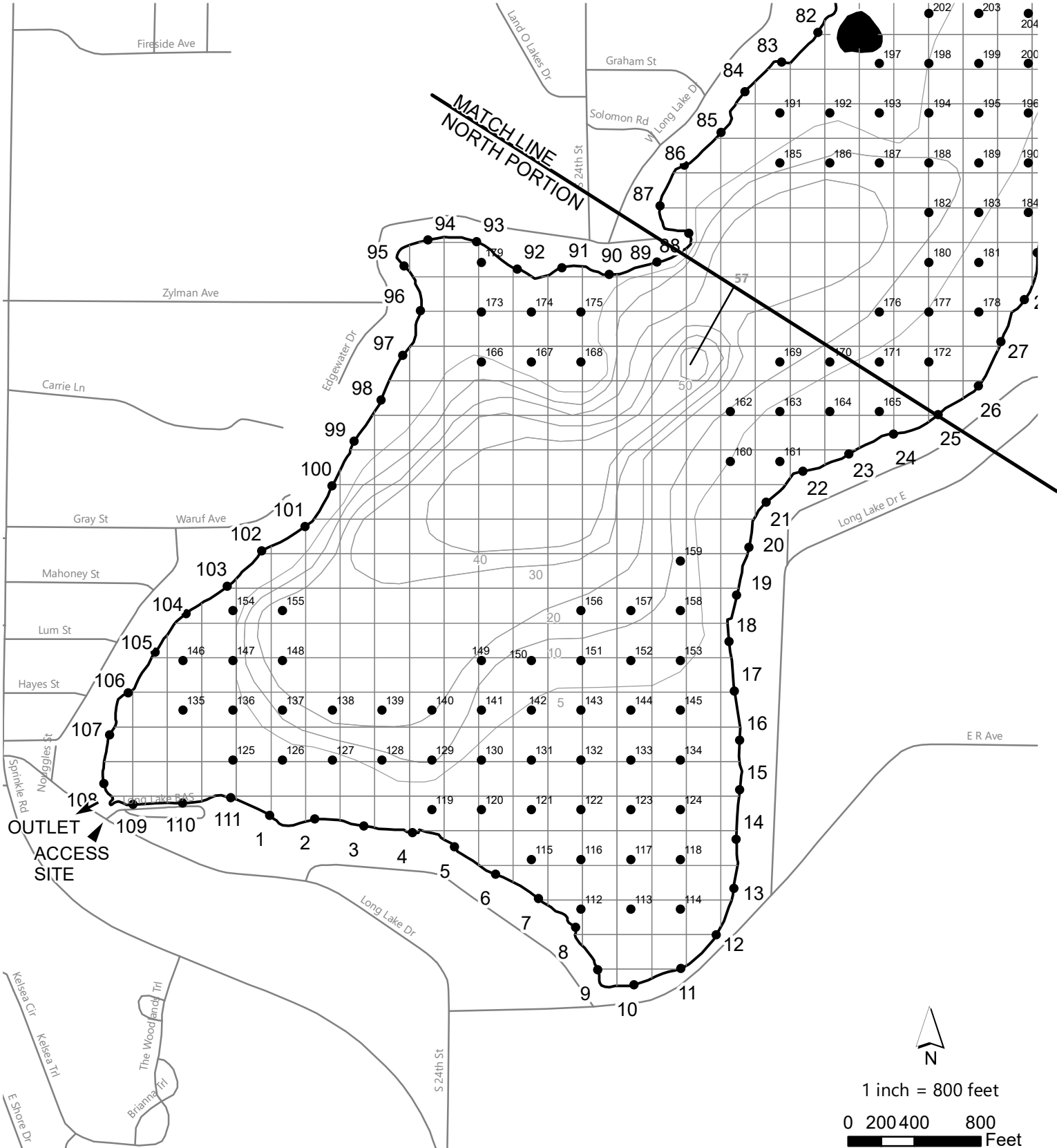
□ = 1 ACRE

Date: _____

Crew: _____

Weather: _____

Notes:



TOTAL LAKE AREA = 496 ACRES
 REVISION DATE: JANUARY 2021
 DEPTH CONTOUR SOURCE - MICHIGAN CONSERVATION DEPARTMENT 1953.

N

1 inch = 800 feet

0 200 400 800 Feet

progressive|ae