

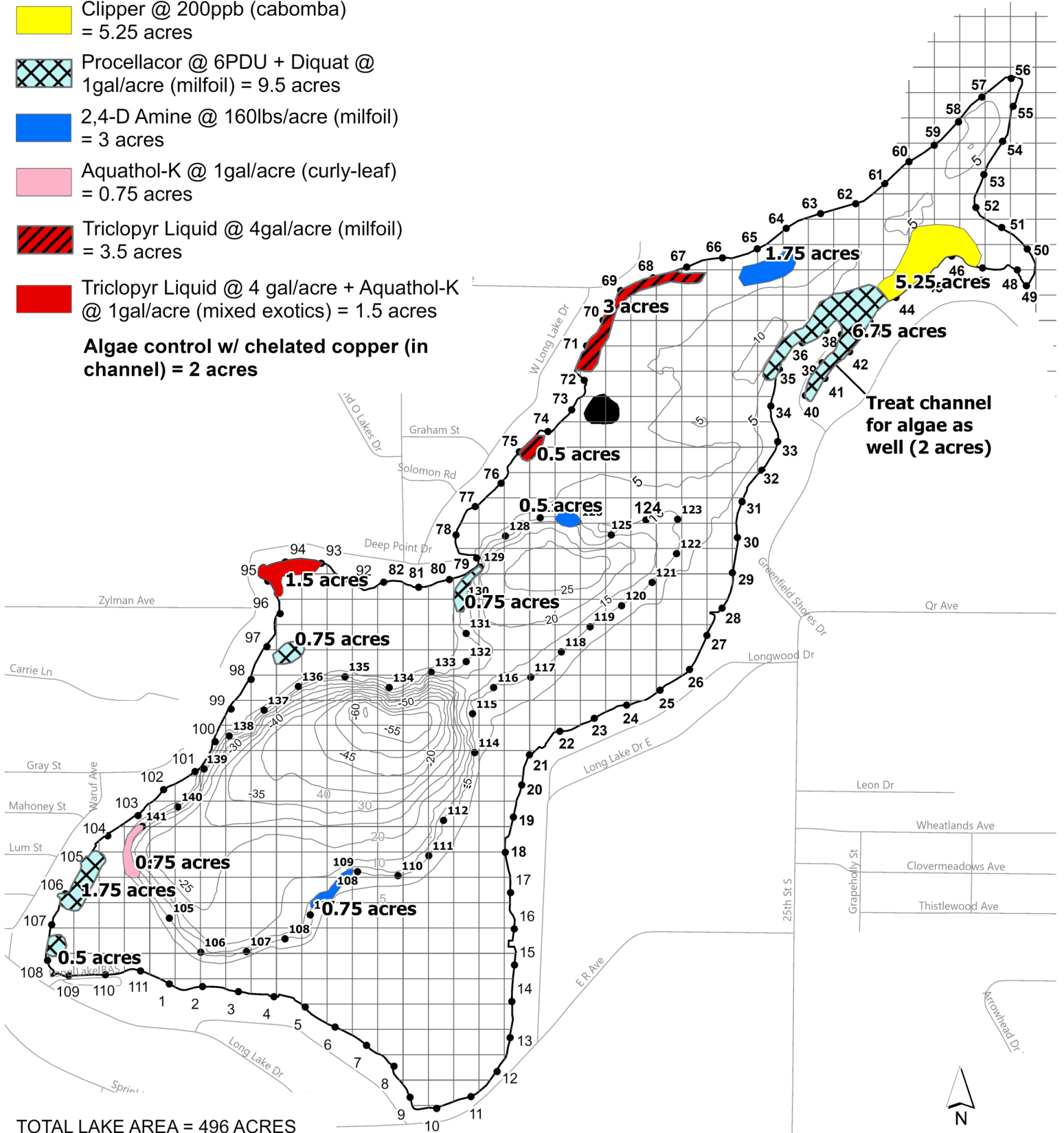
LONG LAKE KALAMAZOO COUNTY, MICHIGAN TREATMENT MAP SURVEY DATE: MAY 15, 2023

□ = 1 ACRE

Treatment

- Clipper @ 200ppb (cabomba)
= 5.25 acres
- Procellacor @ 6PDU + Diquat @
1gal/acre (milfoil) = 9.5 acres
- 2,4-D Amine @ 160lbs/acre (milfoil)
= 3 acres
- Aquathol-K @ 1gal/acre (curly-leaf)
= 0.75 acres
- Triclopyr Liquid @ 4gal/acre (milfoil)
= 3.5 acres
- Triclopyr Liquid @ 4 gal/acre + Aquathol-K
@ 1gal/acre (mixed exotics) = 1.5 acres

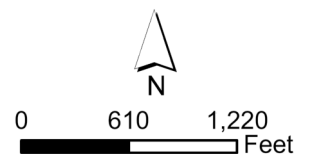
Algae control w/ chelated copper (in channel) = 2 acres



TOTAL LAKE AREA = 496 ACRES
REVISION DATE: JANUARY 2023

DEPTH CONTOUR SOURCE - MICHIGAN CONSERVATION DEPARTMENT 1953.

The applicator shall make adjustments, if needed, to comply with EGLE permit requirements.



progressive | ae

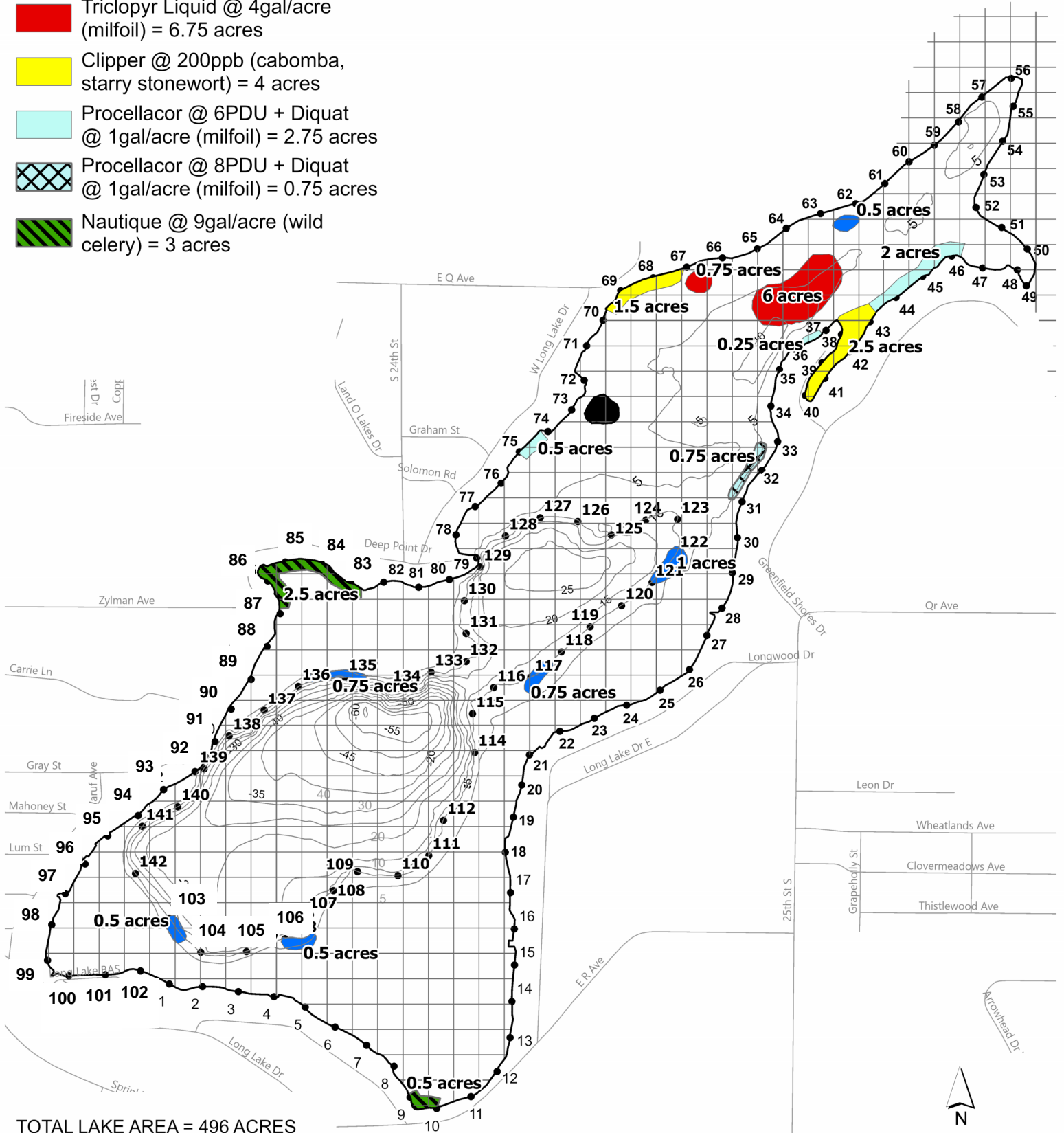
LONG LAKE KALAMAZOO COUNTY, MICHIGAN TREATMENT MAP

□ = 1 ACRE

SURVEY DATE: JUNE 22, 2023

Treatment

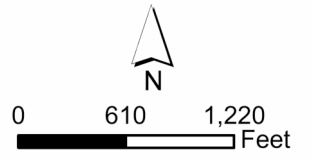
- 2,4-D Amine @ 160lbs/acre (milfoil) = 4 acres
- Triclopyr Liquid @ 4gal/acre (milfoil) = 6.75 acres
- Clipper @ 200ppb (cabomba, starry stonewort) = 4 acres
- Procellacor @ 6PDU + Diquat @ 1gal/acre (milfoil) = 2.75 acres
- Procellacor @ 8PDU + Diquat @ 1gal/acre (milfoil) = 0.75 acres
- Nautique @ 9gal/acre (wild celery) = 3 acres



TOTAL LAKE AREA = 496 ACRES
REVISION DATE: JANUARY 2023

DEPTH CONTOUR SOURCE - MICHIGAN CONSERVATION DEPARTMENT 1953.

The applicator shall make adjustments, if needed, to comply with EGLE permit requirements.






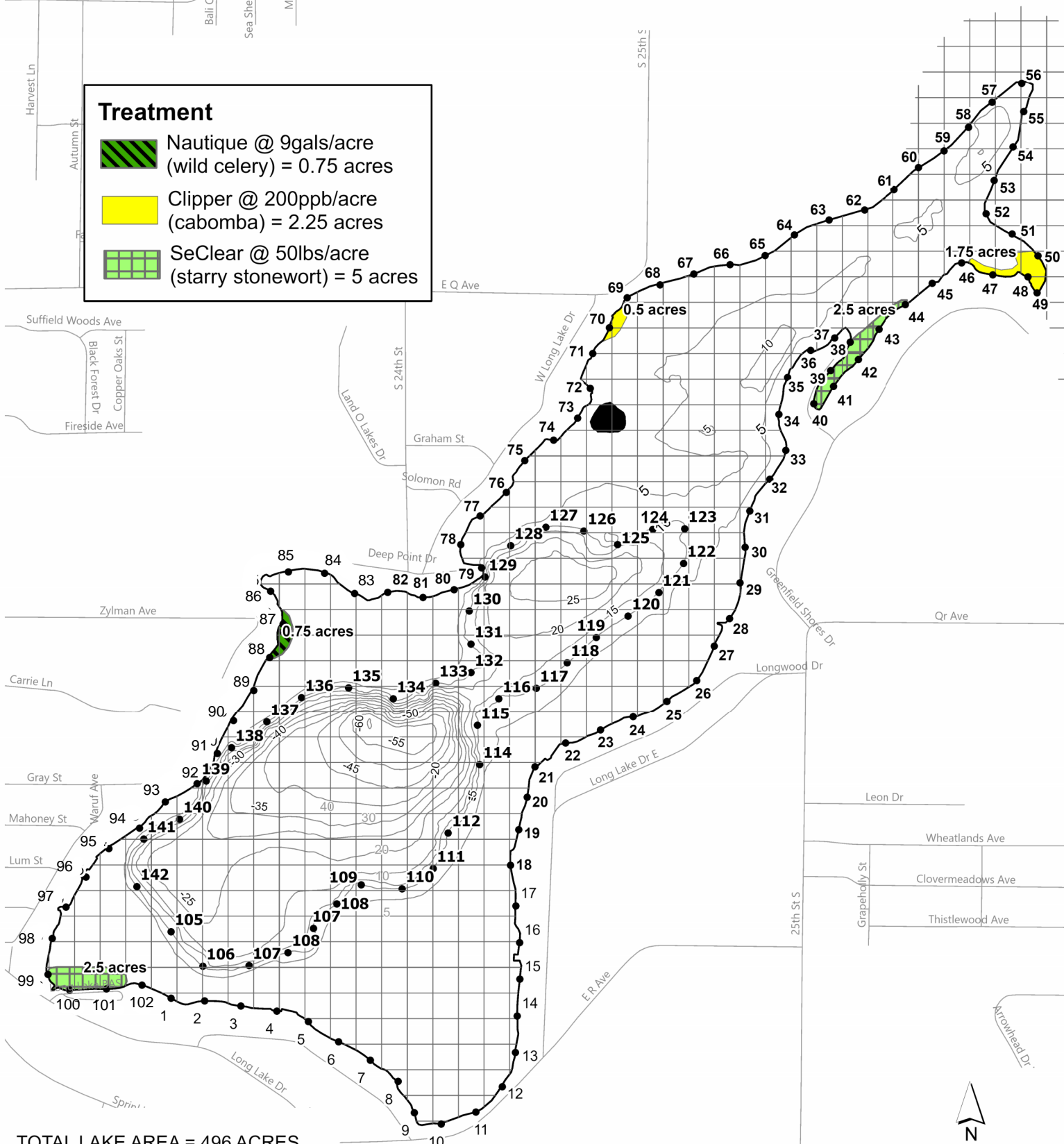
progressive | ae

LONG LAKE KALAMAZOO COUNTY, MICHIGAN 2023 TREATMENT MAP SURVEYED: JULY 31, 2023

□ = 1 ACRE

Treatment

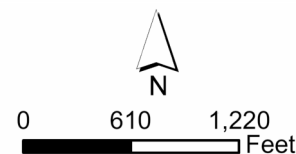
-  Nautique @ 9gals/acre
(wild celery) = 0.75 acres
-  Clipper @ 200ppb/acre
(cabomba) = 2.25 acres
-  SeClear @ 50lbs/acre
(starry stonewort) = 5 acres



TOTAL LAKE AREA = 496 ACRES
REVISION DATE: JANUARY 2023

DEPTH CONTOUR SOURCE - MICHIGAN CONSERVATION DEPARTMENT 1953.

The applicator shall make adjustments, if needed, to comply with EGLE permit requirements.



progressive | ae