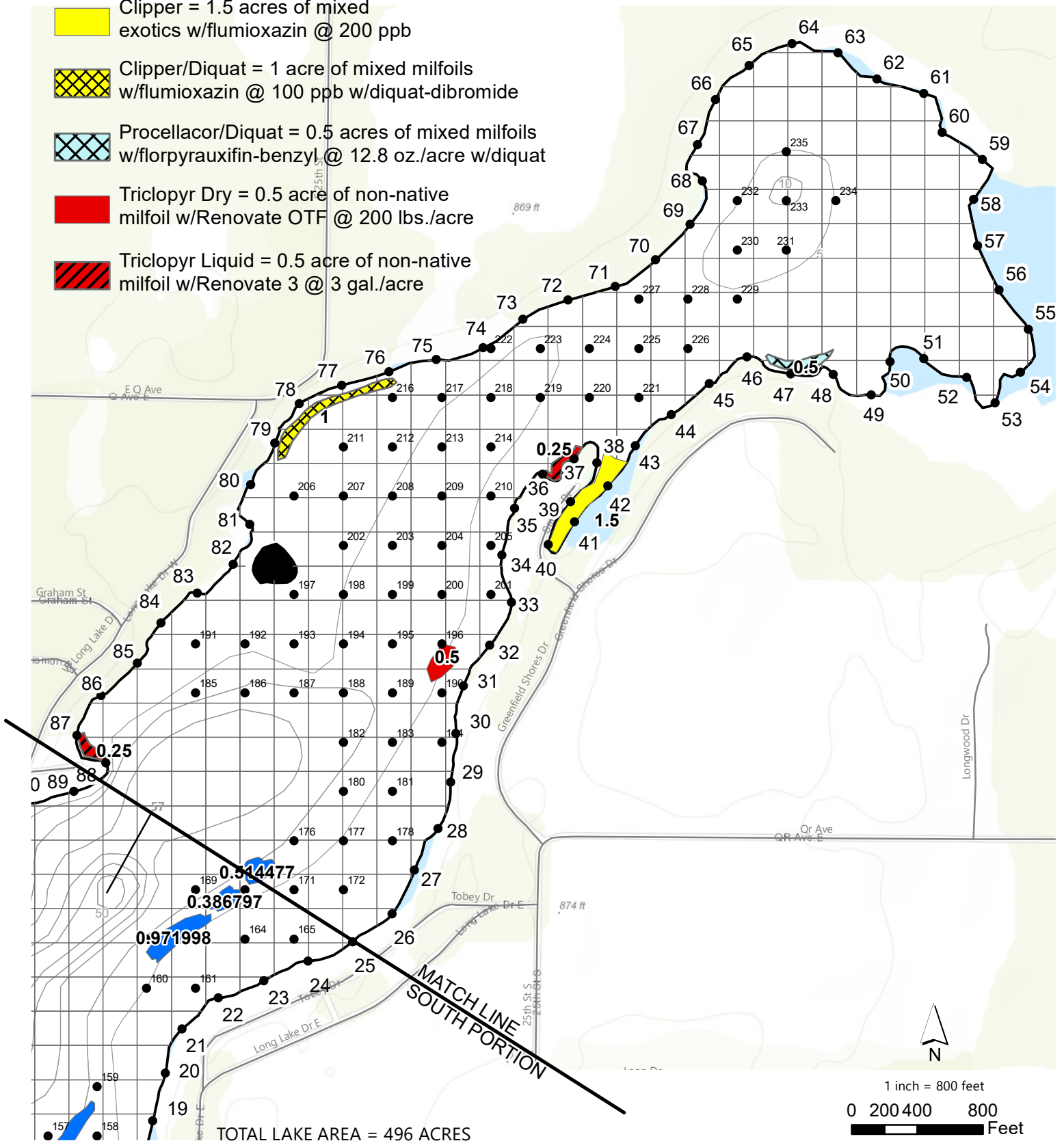


# LONG LAKE (NORTH PORTION) KALAMAZOO COUNTY, MICHIGAN May 17, 2021 TREATMENT MAP

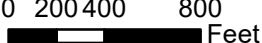
## Treatment

- Clipper = 1.5 acres of mixed exotics w/flumioxazin @ 200 ppb
- Clipper/Diquat = 1 acre of mixed milfoils w/flumioxazin @ 100 ppb w/diquat-dibromide
- Procellacor/Diquat = 0.5 acres of mixed milfoils w/florpyrauxifin-benzyl @ 12.8 oz./acre w/diquat
- Triclopyr Dry = 0.5 acre of non-native milfoil w/Renovate OTF @ 200 lbs./acre
- Triclopyr Liquid = 0.5 acre of non-native milfoil w/Renovate 3 @ 3 gal./acre



TOTAL LAKE AREA = 496 ACRES  
 25% OF POTENTIAL SPAWNING AREA = 91 ACRES  
 REVISION DATE: JANUARY 2021

The applicator shall make adjustments, if needed, to comply with EGLE permit requirements.  
 DEPTH CONTOUR SOURCE - MICHIGAN CONSERVATION DEPARTMENT 1953.

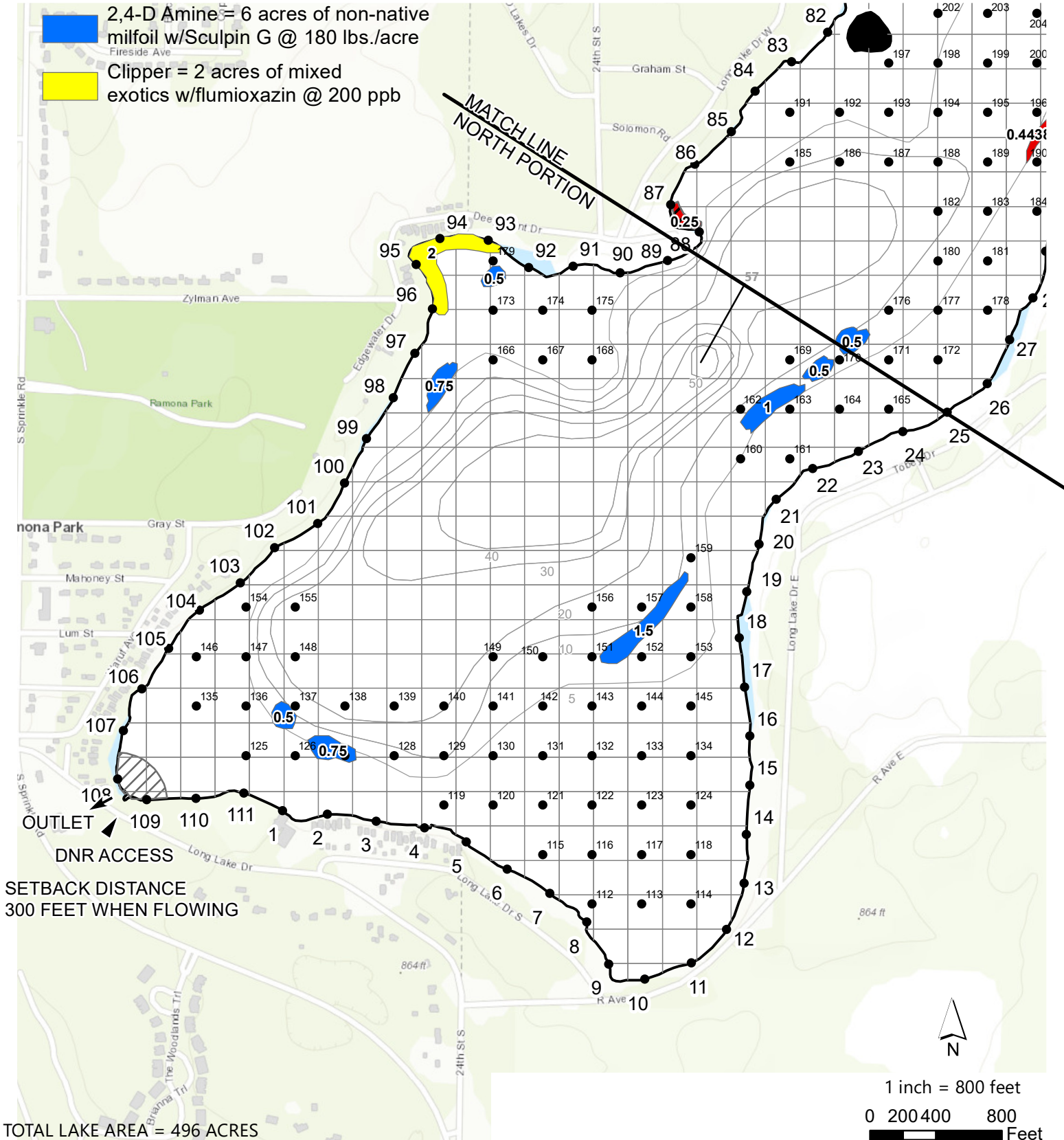
1 inch = 800 feet  
 0 200 400 800 Feet  
  
 progressive|ae

# LONG LAKE (SOUTH PORTION) KALAMAZOO COUNTY, MICHIGAN May 17, 2021 TREATMENT MAP

□ = 1 ACRE

## Treatment

- 2,4-D Amine = 6 acres of non-native milfoil w/Sculpin G @ 180 lbs./acre
- Clipper = 2 acres of mixed exotics w/flumioxazin @ 200 ppb



SETBACK DISTANCE  
300 FEET WHEN FLOWING

TOTAL LAKE AREA = 496 ACRES

25% OF POTENTIAL SPAWNING AREA = 91 ACRES

REVISION DATE: JANUARY 2021

The applicator shall make adjustments, if needed, to comply with EGLE permit requirements.  
DEPTH CONTOUR SOURCE - MICHIGAN CONSERVATION DEPARTMENT 1953.

1 inch = 800 feet  
0 200 400 800 Feet

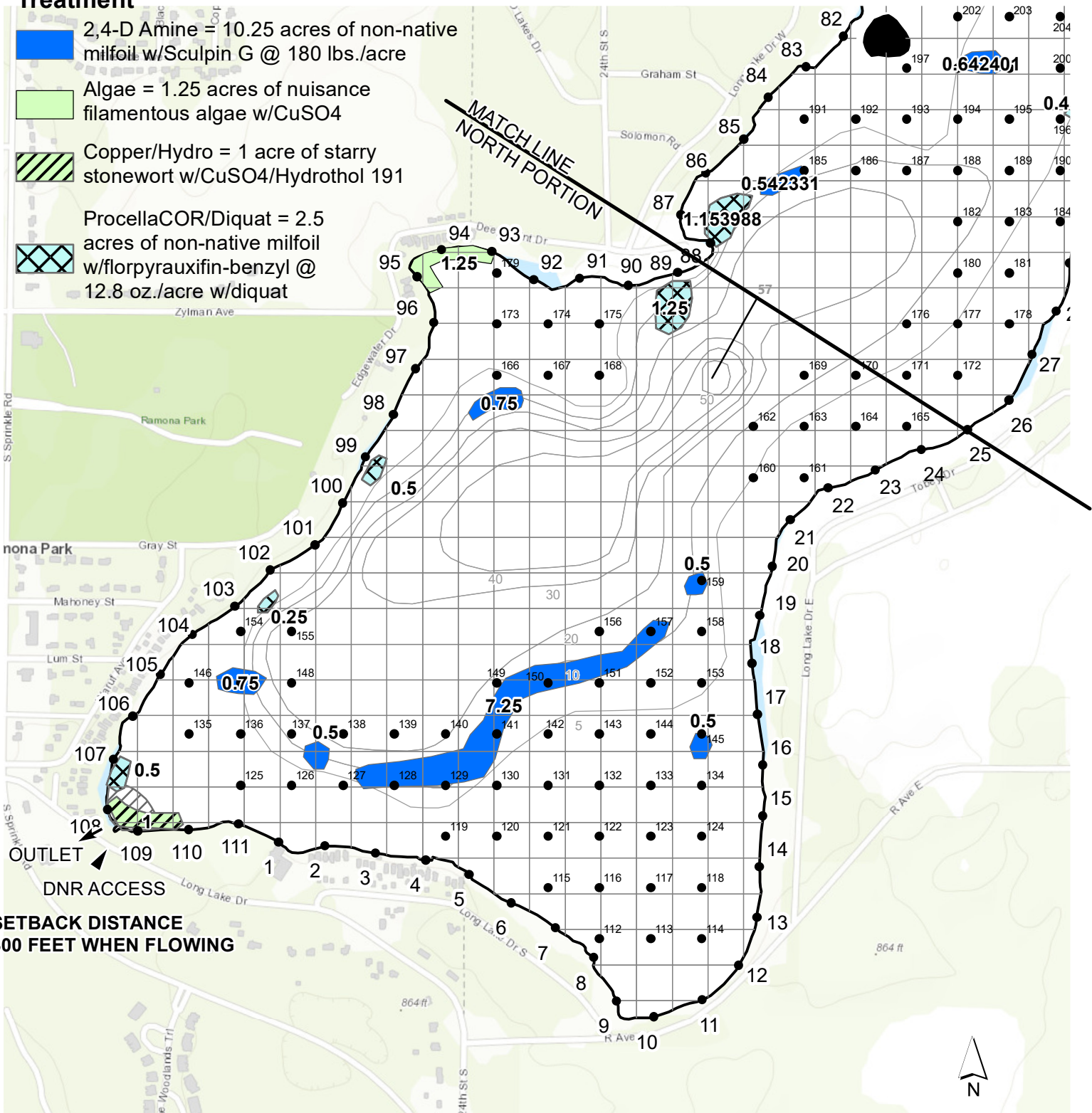
progressive|ae

# LONG LAKE (SOUTH PORTION) KALAMAZOO COUNTY, MICHIGAN JUNE 17, 2021 TREATMENT MAP

□ = 1 ACRE

## Treatment


- 2,4-D Amine = 10.25 acres of non-native milfoil w/Sculpin G @ 180 lbs./acre
- Algae = 1.25 acres of nuisance filamentous algae w/CuSO4
- Copper/Hydro = 1 acre of starry stonewort w/CuSO4/Hydrothol 191
- ProcellaCOR/Diquat = 2.5 acres of non-native milfoil w/florpyrauxifin-benzyl @ 12.8 oz./acre w/diquat



**SETBACK DISTANCE  
300 FEET WHEN FLOWING**

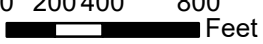
TOTAL LAKE AREA = 496 ACRES  
25% OF POTENTIAL SPAWNING AREA = 91 ACRES  
REVISION DATE: JANUARY 2021

The applicator shall make adjustments, if needed, to comply with EGLE permit requirements.  
DEPTH CONTOUR SOURCE - MICHIGAN CONSERVATION DEPARTMENT 1953.



1 inch = 800 feet

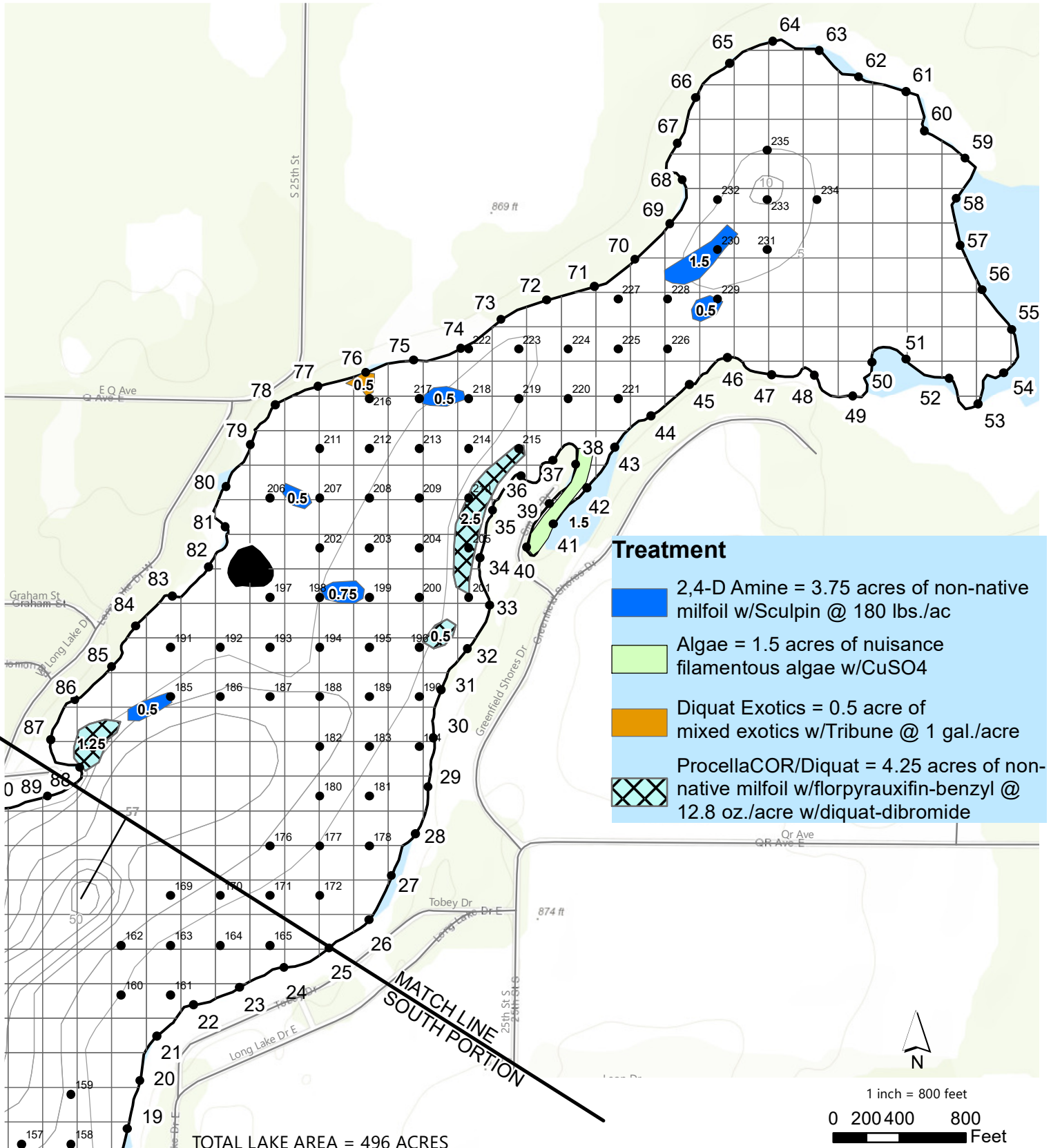
0 200 400 800 Feet



**progressive|ae**

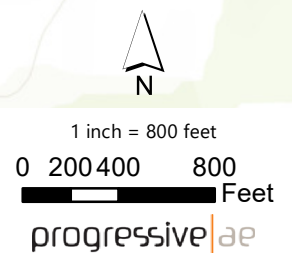


**LONG LAKE (NORTH PORTION)  
KALAMAZOO COUNTY, MICHIGAN  
JUNE 17, 2021 TREATMENT MAP**



TOTAL LAKE AREA = 496 ACRES  
 25% OF POTENTIAL SPAWNING AREA = 91 ACRES  
 REVISION DATE: JANUARY 2021





The applicator shall make adjustments, if needed, to comply with EGLE permit requirements.  
 DEPTH CONTOUR SOURCE - MICHIGAN CONSERVATION DEPARTMENT 1953.

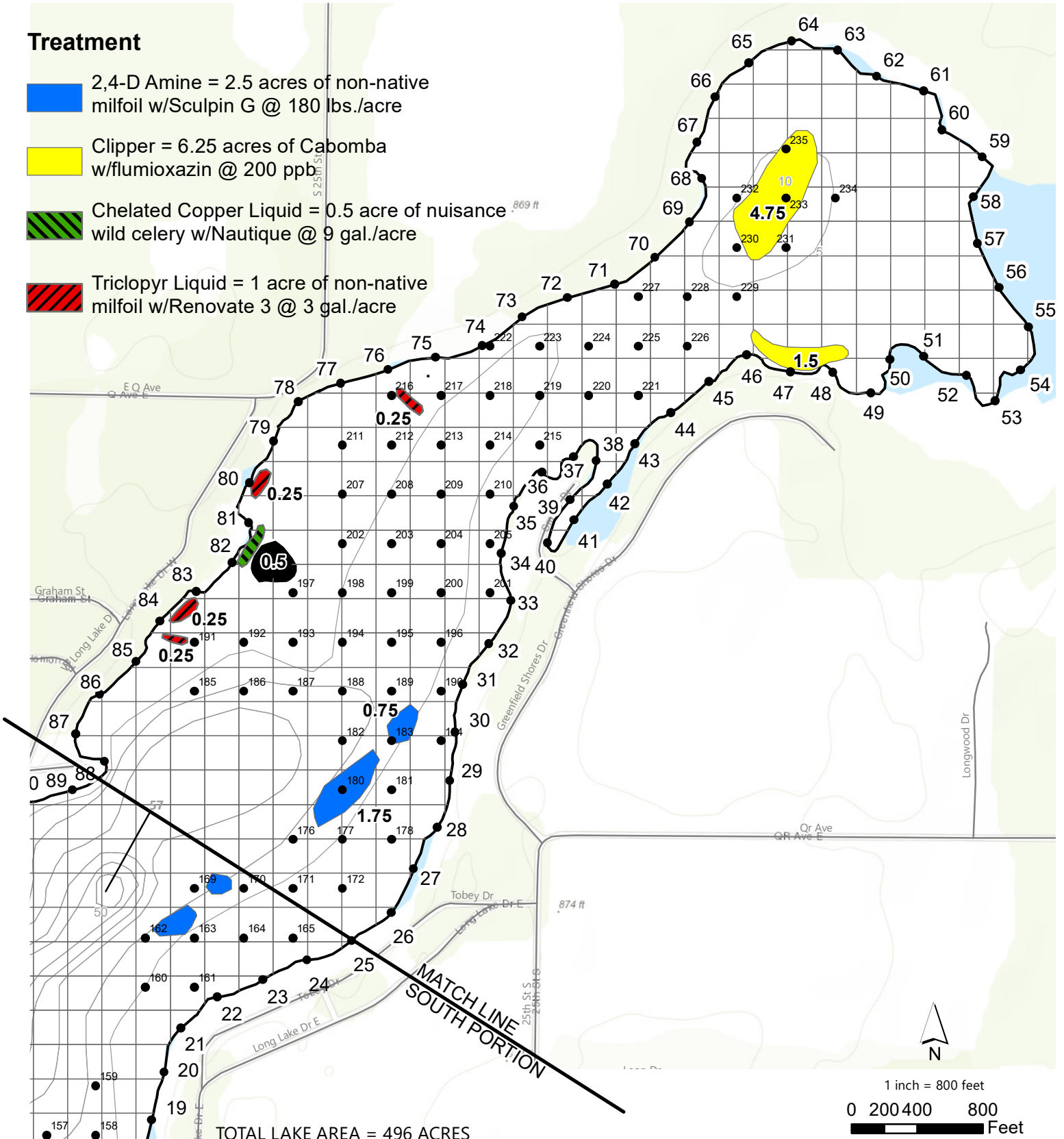




# LONG LAKE (NORTH PORTION) KALAMAZOO COUNTY, MICHIGAN JULY 1, 2021 TREATMENT MAP


## Treatment

-  2,4-D Amine = 2.5 acres of non-native milfoil w/Sculpin G @ 180 lbs./acre
-  Clipper = 6.25 acres of Cabomba w/flumioxazin @ 200 ppb
-  Chelated Copper Liquid = 0.5 acre of nuisance wild celery w/Nautique @ 9 gal./acre
-  Triclopyr Liquid = 1 acre of non-native milfoil w/Renovate 3 @ 3 gal./acre



TOTAL LAKE AREA = 496 ACRES  
 25% OF POTENTIAL SPAWNING AREA = 91 ACRES  
 REVISION DATE: JANUARY 2021

The applicator shall make adjustments, if needed, to comply with EGLE permit requirements.  
 DEPTH CONTOUR SOURCE - MICHIGAN CONSERVATION DEPARTMENT 1953.

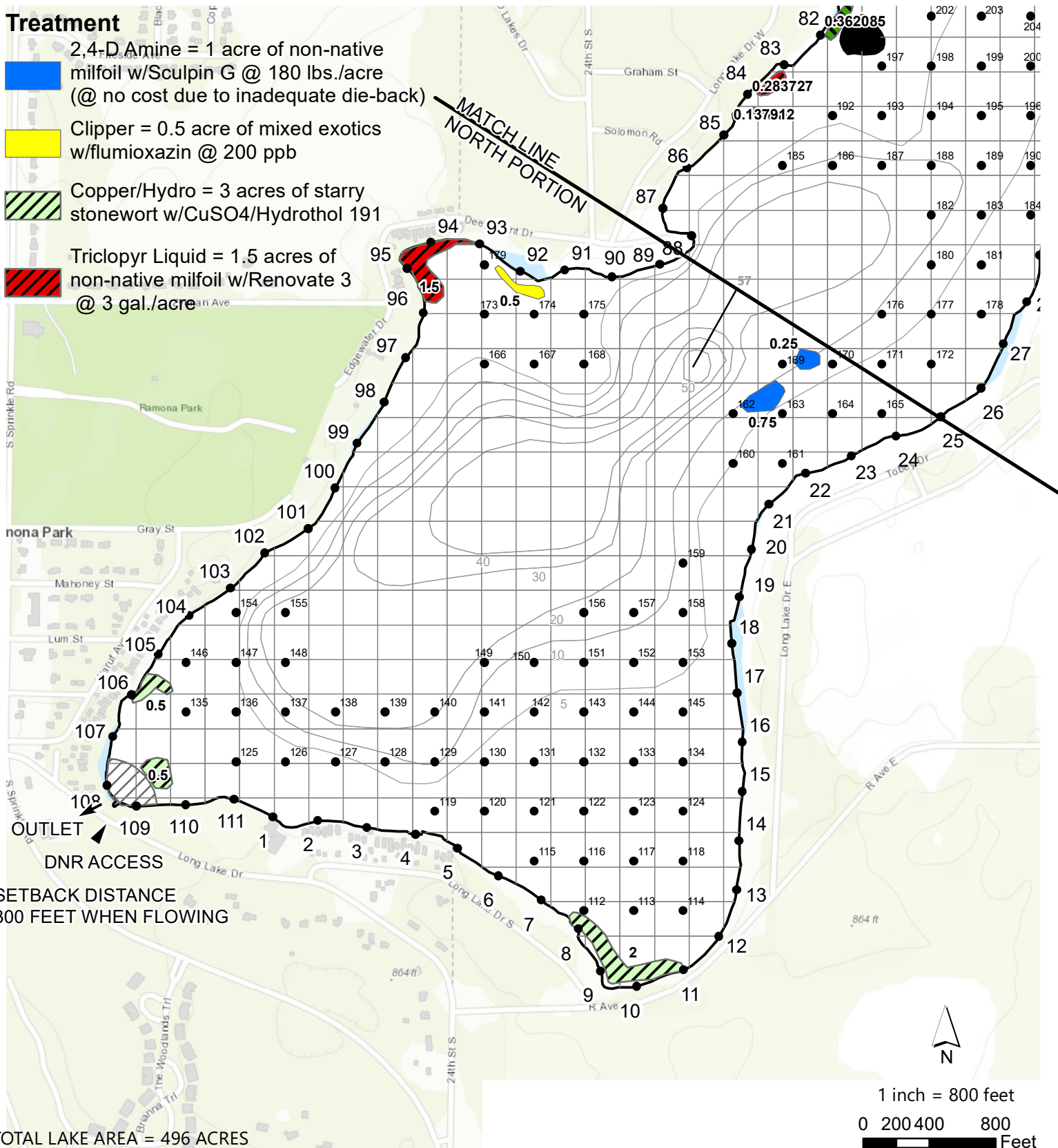
1 inch = 800 feet  
 0 200 400 800 Feet  
  
 progressive|ae

# LONG LAKE (SOUTH PORTION) KALAMAZOO COUNTY, MICHIGAN JULY 1, 2021 TREATMENT MAP

□ = 1 ACRE

## Treatment


- 2,4-D Amine = 1 acre of non-native milfoil w/Sculpin G @ 180 lbs./acre (@ no cost due to inadequate die-back)
- Clipper = 0.5 acre of mixed exotics w/flumioxazin @ 200 ppb
- Copper/Hydro = 3 acres of starry stonewort w/CuSO4/Hydrothol 191
- Triclopyr Liquid = 1.5 acres of non-native milfoil w/Renovate 3 @ 3 gal./acre



SETBACK DISTANCE  
300 FEET WHEN FLOWING

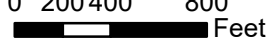
TOTAL LAKE AREA = 496 ACRES  
25% OF POTENTIAL SPAWNING AREA = 91 ACRES  
REVISION DATE: JANUARY 2021

The applicator shall make adjustments, if needed, to comply with EGLE permit requirements.  
DEPTH CONTOUR SOURCE - MICHIGAN CONSERVATION DEPARTMENT 1953.



1 inch = 800 feet

0 200 400 800 Feet



**progressive** | ae